



WORLDWIDE RESEARCH & DEVELOPMENT

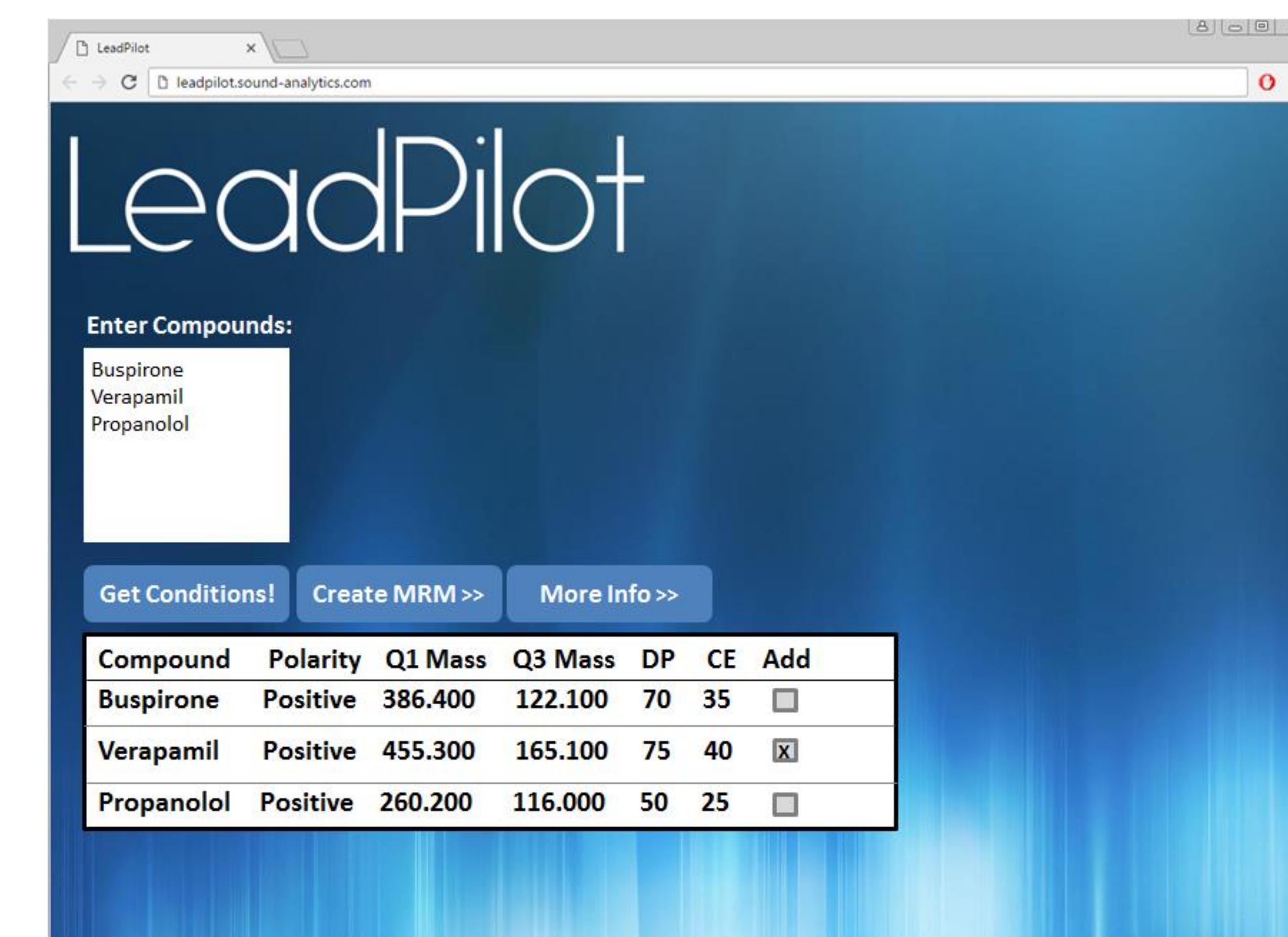
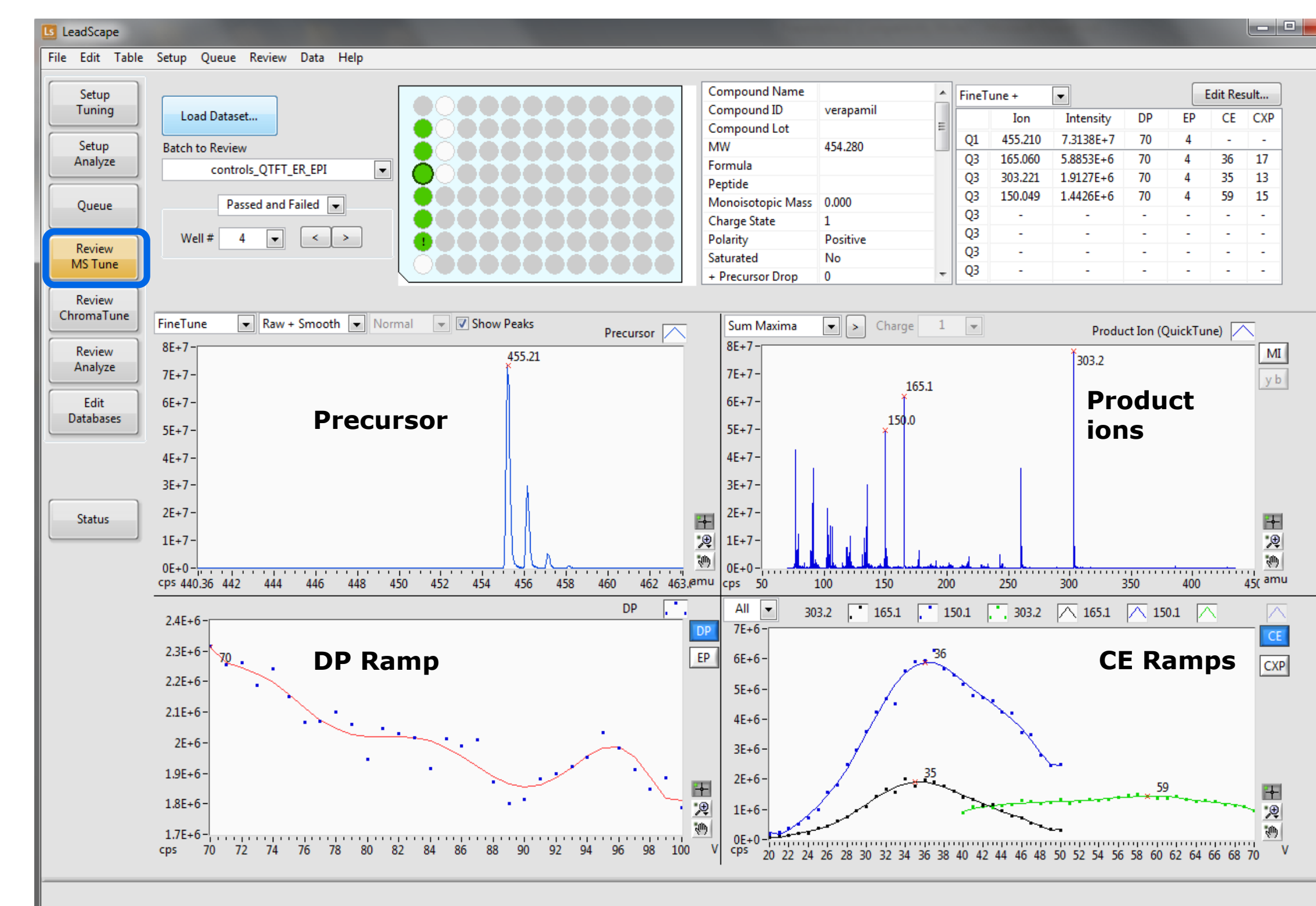
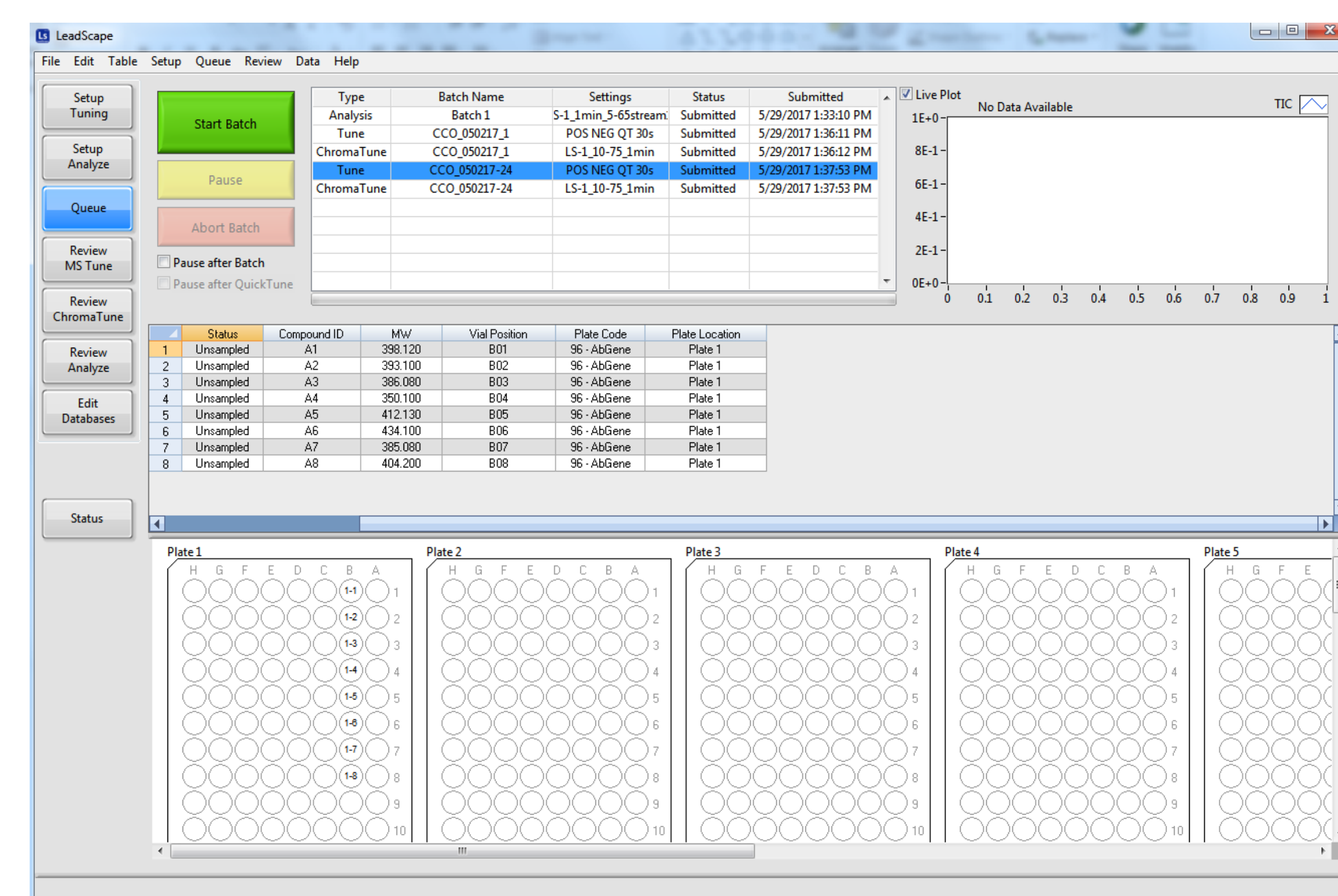
LeadScope: An automated platform for LC/MS/MS methods development, storage and distribution

Hui Zhang¹; Jianhua Liu¹; Brendon Kapinos¹; John Janiszewski¹; Wayne Lootsma²; Steve Ainley²; Joseph Janiszewski²; Darren Dumlao¹

¹Pfizer Inc., Groton, CT, ²Sound Analytics, Niantic, CT



LeadScope Knowledge-Base: Optimize, ChromaTune, Analyze, Store



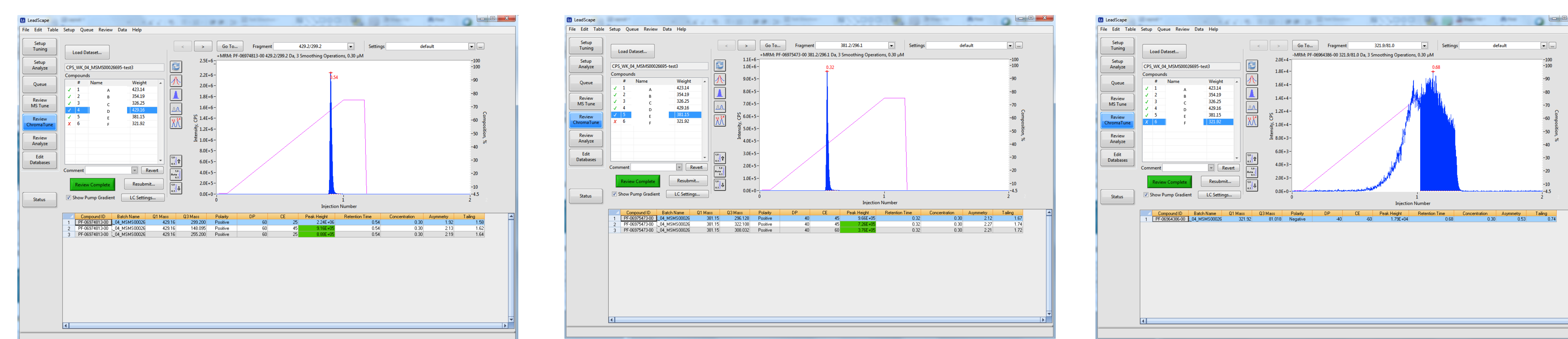
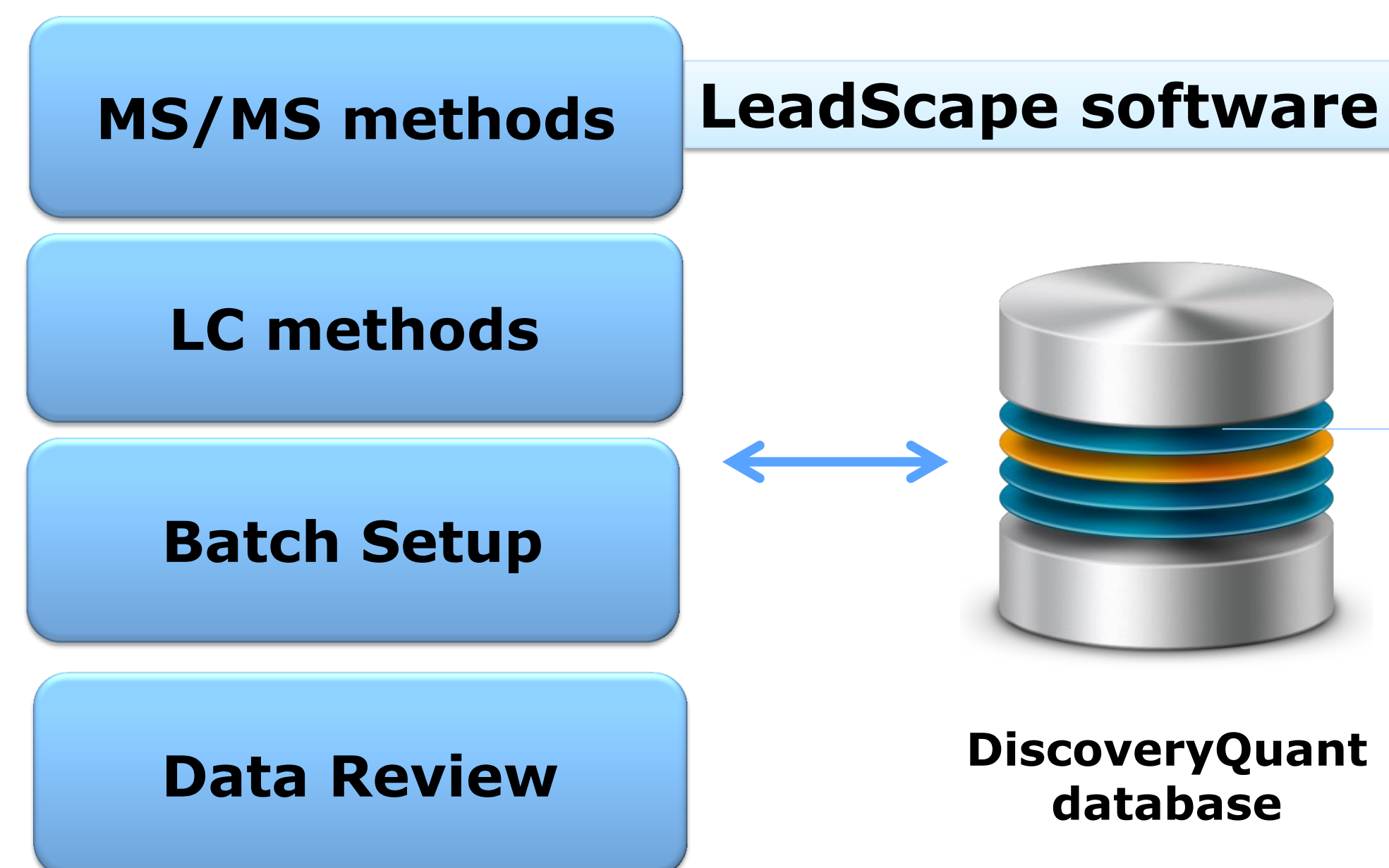
LeadScope is built on the DiscoveryQuant software workflow

LeadScope seamlessly integrates with the LeadSampler (LS- I) to drive throughput in both targeted and un-targeted LC/MS applications.

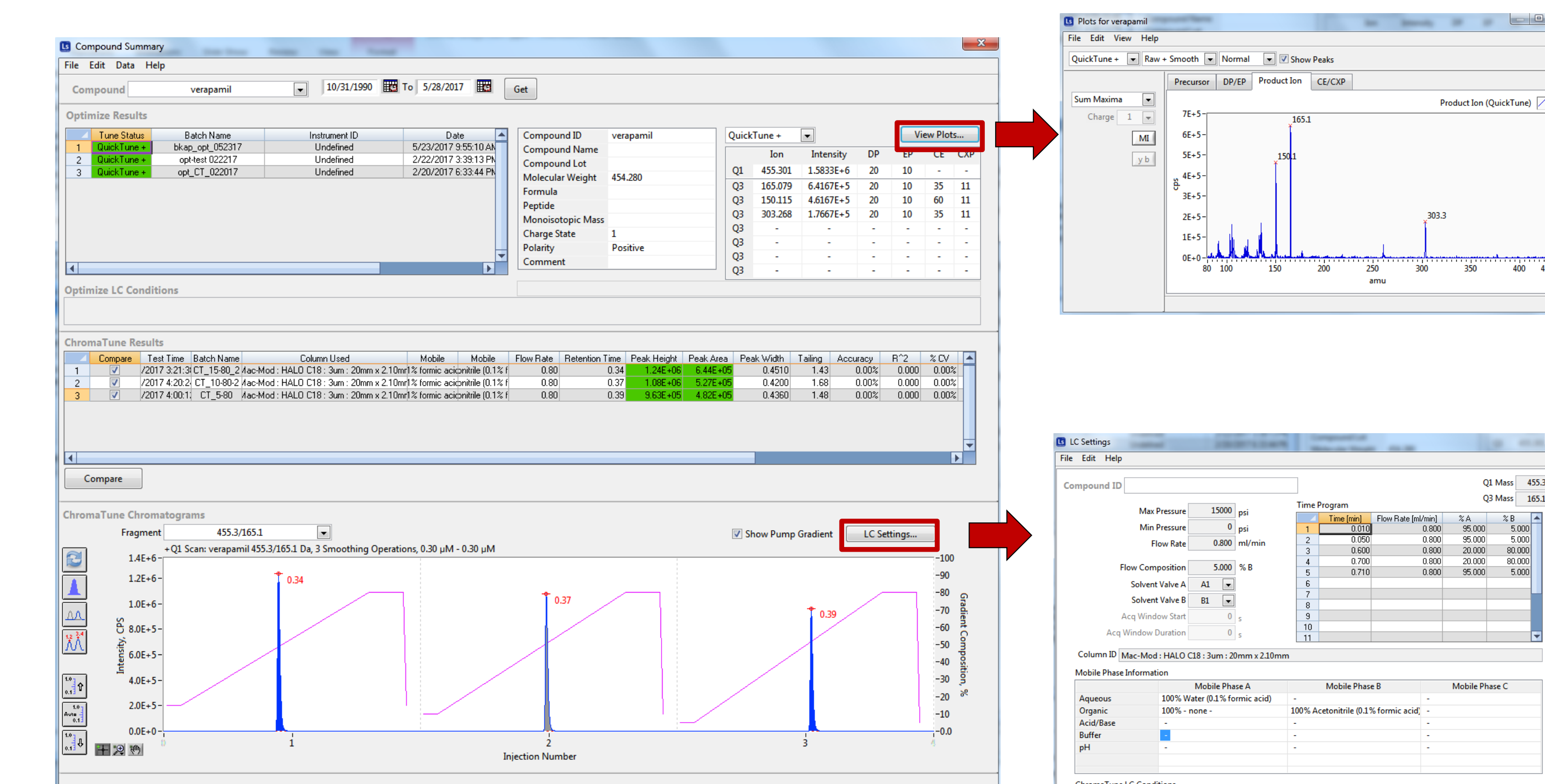
The LS- I design coupled with LeadScope automation provides a robust, high performance solution for HT-LC/MS across numerous study types and LC methods

- Functions can be coupled. Left Panel: Batch Queue with Experimental Sequence (Optimize-Chromatune), an Analyze batch leads off the Queue. Right Panel: Optimize Review of small experimental batch

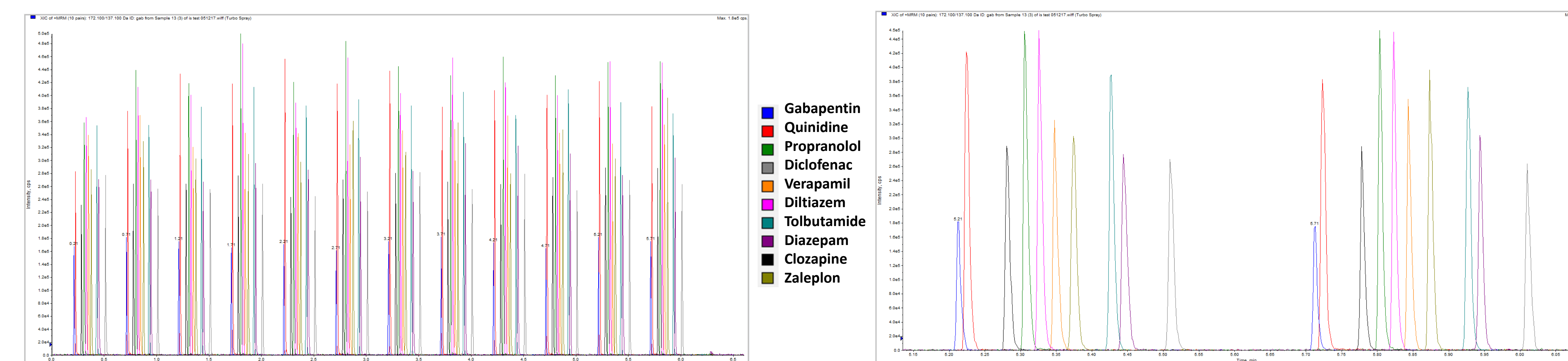
- LeadPilot: Web-based application for working with the DiscoveryQuant (DQ) database. Users can query for MRM and LC chemistries tested using "more info" button on web-form. MRM methods and Analyst (Sciex) import batches can be built on the fly using information stored in DQ-database.



- Chromatune Review, Left and Middle Panels: Overlaid gradient traces and chromatographic figures of merit (in table), Right most Panel showing poor LC chemistry for analyte #6.



-Compound Summary: Compendium of stored bioanalytical knowledge. Accessible through LeadScope, LeadPilot Web-Widget.



- Left Panel: Dual stream, 30s/inj, 5-90%B, A: 0.1% FA in water, B: 0.1% FA in acetonitrile, HALO C18 2.7µ 20x2.1mm direct-connect (x2). Right Panel: Dual Stream expanded view

LeadScope Design Features :

- LeadScope/LeadSampler makes high-throughput LC/MS approaches easily accessible across drug discovery.
- LeadScope stores accumulated LC/MS data (knowledge) in central database, it reduces redundant analyses and increases ROI for LC/MS operations.
- LC/MS-chemistry can be accessed on-the-fly from LeadScope and LeadPilot (Web-app)
- LeadPilot (web-based) makes information stored in DiscoveryQuant database accessible across the organization

